



How to install your new floor

HERRINGBONE SPC FLOORING



Tools you'll need

To install your new floor, you'll need the following tools.

- Tape measure
- Spirit level
- Pencil
- Chalk line
- Workbench or sawhorse
- Combination square
- Planks or tiles of flooring
- Spacers
- Tapping block
- Pull bar
- Rubber mallet
- Underlay and underlay tape (if needed)
- Handsaw, electric saw, chop saw or Stanley knife (depending on flooring type)
- Chisel (for fitting around architrave)
- Drill (for covering pipework)
- Moisture meter – the correct type for your subfloor
- Beading or skirting boards (to finish the look)
- Safety precautions eg. knee pads, safety goggles, dust masks, ear defenders

Floating Floor

With a floating floor installation, the tiles are connected to one another rather than being fixed directly to the subfloor. All of our SPC luxury vinyl tiles use this method, thanks to their convenient click-fit system. This type of installation typically requires underlay to be properly installed and prepared in advance. However, all of our SPC luxury vinyl tiles come with an integrated underlay that is 100% waterproof and helps protect against mildew, mould, rot and bacteria. Before fitting, simply ensure your subfloor is clean, dry and smooth to achieve the best possible finish.



SPC LUXURY VINYL TILES

This type of vinyl tile features a rigid limestone-based core, making it exceptionally strong and durable. Each tile is designed with a click-lock joining system, allowing for a floating floor installation.

A & B PLANKS

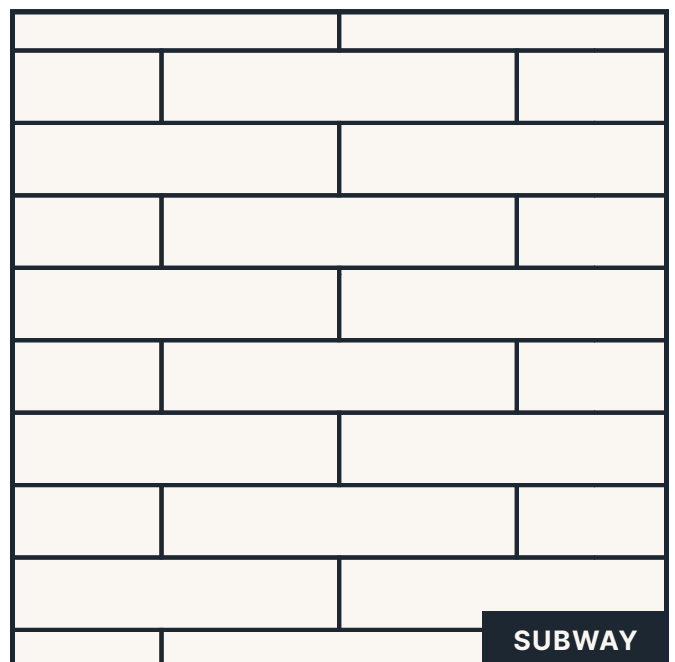
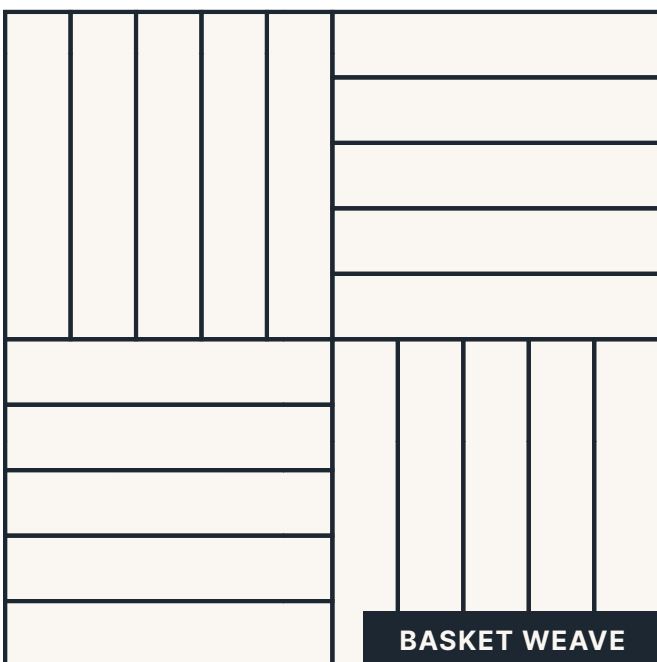
A & B planks consist of two different plank types that interlock together: an "A" plank and a "B" plank, with joints positioned on opposite sides. Most of our herringbone flooring is supplied in this format, with each pack containing an equal number of A and B boards to ensure a precise and consistent layout.



Installing parquet flooring can be a complex process that depends on precise measurements and careful attention to detail. If you're not completely confident, we recommend using a professional fitter to ensure the best possible finish.

At Easy Step Flooring, our team of experienced fitters are highly skilled in working with our products and have extensive expertise in wood flooring installation. Simply contact us on **0203 835 2486** or email **sales@easystepflooring.co.uk** and one of our friendly advisors will be happy to help.

Parquet flooring refers to flooring made up of individual blocks arranged in decorative patterns. By varying the layout of these blocks, you can create a range of distinctive designs. Some common examples are illustrated below.





Check your flooring

Once your flooring arrives, we recommend opening one box to check that you're happy with the product. Some of our wood-effect vinyl flooring is designed to closely replicate the look of real wood, which means you may notice natural colour variation between planks and batches. When it comes to installation, you can enhance this authentic effect by mixing planks from different packs, creating a beautifully varied and natural-looking finish.



Acclimatise for 24-48hrs

It's tempting to start installing your new flooring as soon as it arrives, but it's important to let it acclimatise in the room for at least **24-48 hours**. This helps the vinyl adjust and reduces the risk of brittleness during installation.

To do this, lay the packs flat on the floor or in stacks, keeping them horizontal and distributing the weight evenly. Leave the planks in their packaging and maintain the room at a consistent temperature—around **20-21°C** is ideal.

Avoid exposing the flooring to drafts or extreme conditions. If you have underfloor heating, be sure to gradually increase the temperature to allow the flooring to adapt safely.



Prepare your subfloor

Before laying your new floor, you'll need to remove any existing flooring, prepare the subfloor, and ensure it is clean, dry, and level. For the best results, a concrete or wooden subfloor is recommended. Use a moisture meter to check that the subfloor is sufficiently dry before you begin.

If you have a concrete subfloor, make sure it is completely dry prior to installation. A damp-proof membrane should be laid on top to protect against moisture reaching the boards, helping to prevent expansion or buckling. Many modern underlays now include built-in damp-proof membranes for added convenience.

Any screws or nails in the subfloor should be countersunk below the surface to prevent puncturing the underlay. Remove any old adhesive and vacuum thoroughly to eliminate dust and debris.

Having a level subfloor is especially important when installing parquet flooring, so take extra care to ensure it is perfectly even for a smooth, long-lasting finish.



Choose the look

Consider the overall look you want for your herringbone floor. Decide on the direction and style of the pattern, and think about how you want it to draw the eye as you enter the room.



It's best to install your floor as the **final step** in a renovation project. Work from the top of the room down, so by the time you're ready to lay the flooring, the risk of damage is minimised. If you plan to place very heavy furniture on the floor, you may want to secure it with adhesive for extra stability.

Let's begin

FLOATING METHOD

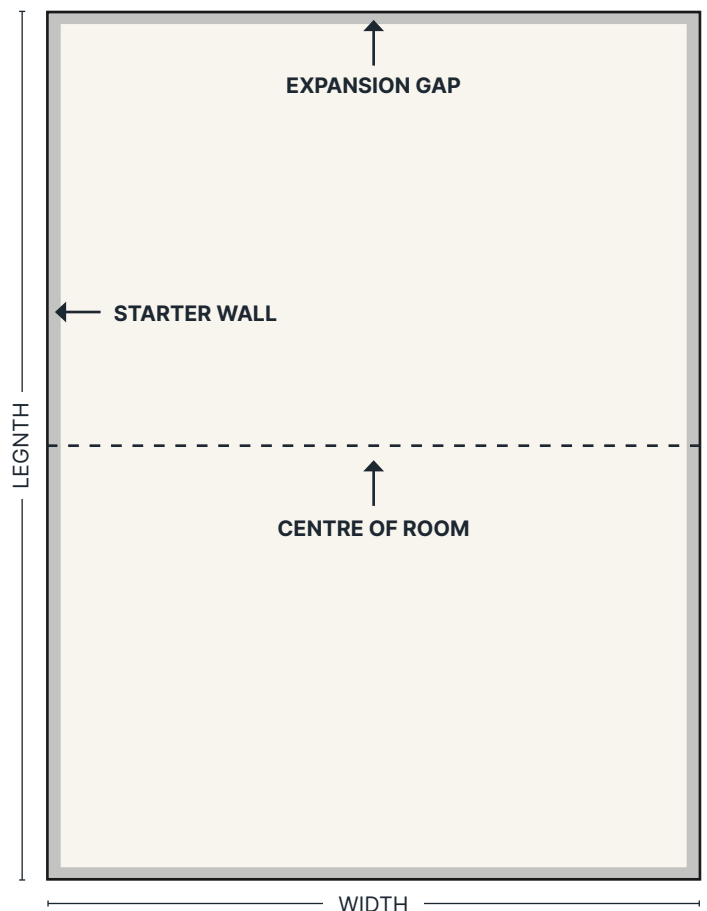


Measure your space

Begin by measuring the longest wall, or the direction you have planned, and divide the measurement by two to find the centre line of the room. Mark this clearly using a chalk line, as the first strip of planks will be aligned to this line.

You may also wish to add extra guide lines, including a horizontal line to ensure you are working at a precise 90-degree angle, and additional lines parallel to the centre line to mark the outer edges of each strip.

Place spacers around the perimeter of the room to allow for an expansion gap of 2mm. If you are installing over underfloor heating, we recommend increasing this gap to a minimum of 5mm.

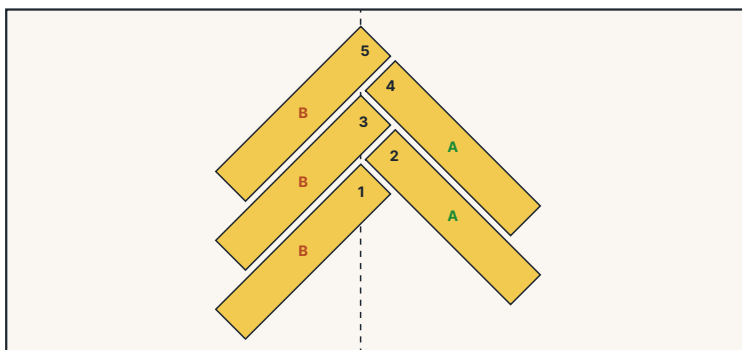


Accurate measurements are essential for achieving a successful parquet installation.

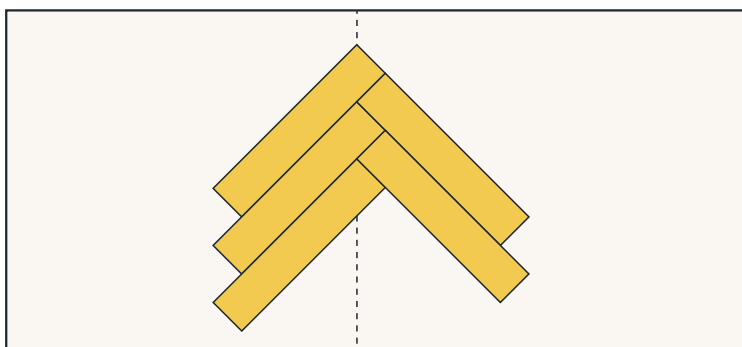
Lay the planks

Separate your A and B planks into two distinct piles. One strip of planks is formed by connecting an A plank to a B plank, followed by the adjoining planks beneath to continue the pattern.

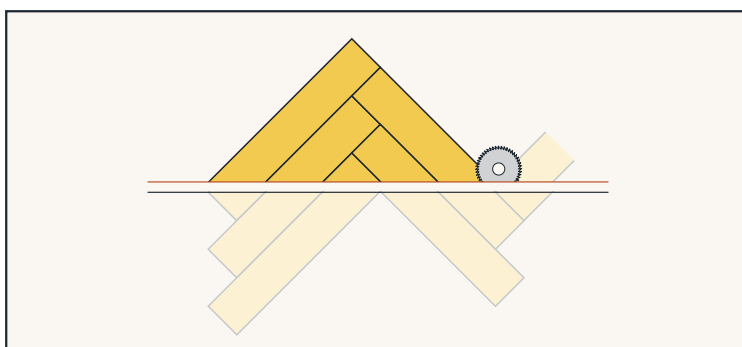
Align the planks so that the highest point of the entire strip sits on the centre line. Due to the nature of the herringbone pattern, it may appear slightly offset to the right of the centre line at first, but this will look balanced and professional once additional strips are added.



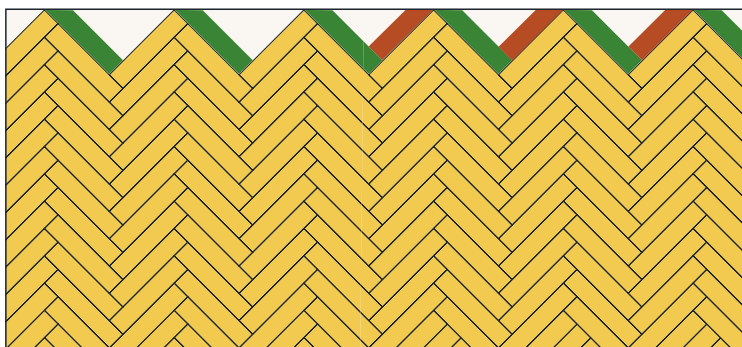
To fully connect the planks, cover the outer end with an offcut or a piece of card and gently tap it using a rubber mallet until the planks sit flush together. Continue joining each plank by clicking the joints into place, starting at a high angle and applying light pressure. Once you hear the click, lower the plank flat onto the floor. Repeat this process to ensure all planks are tightly connected with no visible gaps.



After completing the first strip, double-check all measurements before continuing to lay the remaining strips.



Once all full planks are in place, you'll need to measure and cut planks to complete the pattern around the edges of the room. This stage can be more time-consuming, as it requires precise cutting and careful fitting. For very small pieces, a small amount of adhesive can be applied inside the groove to help secure them in position.



Finishing touches

Fitting Around Pipes

To fit flooring around pipes, start by marking the position of the pipe on the board. Drill a hole at this mark, then make two angled cuts from the edge of the board to the hole, creating a removable wedge. Fit the board around the pipe, then glue the wedge back into place behind the pipe so the plank looks complete.

Fitting Around Door Frames

Begin by removing the door from its frame. Place an offcut of flooring along with a threshold bar on top to check that it will fit under the architrave. If needed, trim the bottom of the architrave with a handsaw and chisel to the correct height. You may also need to trim the bottom of the door before refitting it.

Use matching skirting, beading, and thresholds to cover expansion gaps and seamlessly blend the new flooring with your existing walls. Do not attach trims directly to the flooring, as this could interfere with expansion gaps.

Extra Tips

Keep any leftover planks or cuttings for future repairs. If an expansion gap is too large and the skirting or moulding doesn't cover it, you can cut strips from spare floorboards and glue them into place to fill the gap neatly.

Congratulations! Your floor is complete.



Caring for your new floor

HERRINGBONE SPC

Care tips

- Luxury vinyl tiles are water-resistant, but it's best to wipe up any spills immediately.
- If you have pets, keep their nails trimmed to help prevent scratches. While luxury vinyl tiles are scratch-resistant, a little prevention goes a long way.
- Avoid dragging furniture across the floor, and always use felt pads to protect the surface.
- Minimise prolonged exposure to direct sunlight to keep your floor looking its best.
- For extra protection, consider wearing slippers instead of shoes—especially high heels—to prevent dents.

Cleaning

- Sweep your floor at least once a week to remove dust and dirt that could cause scratches. Use a broom with soft bristles to be gentle on the surface.
- If you use a vacuum, make sure to attach a suitable floor-friendly head that won't damage the tiles. Microfibre mops are also ideal, as they use static electricity to lift dirt instead of just pushing it around.
- Mop your floor every couple of weeks with a slightly damp, well-wrung mop to avoid water seeping into the tiles.
- Only use cleaning products specifically designed for luxury vinyl tiles. If you're unsure about a product, test it first on a small, hidden area before applying it to the entire floor. Avoid vinegar or soap-based cleaners, as these can be too harsh.
- Never use steam cleaners, as the combination of heat and moisture can damage the floor.



If you have any questions simply contact us on **0203 835 2486** or email **sales@easystepflooring.co.uk** and one of our friendly advisors will be happy to help.